

Do not scale from this drawing.  
If in doubt ask.

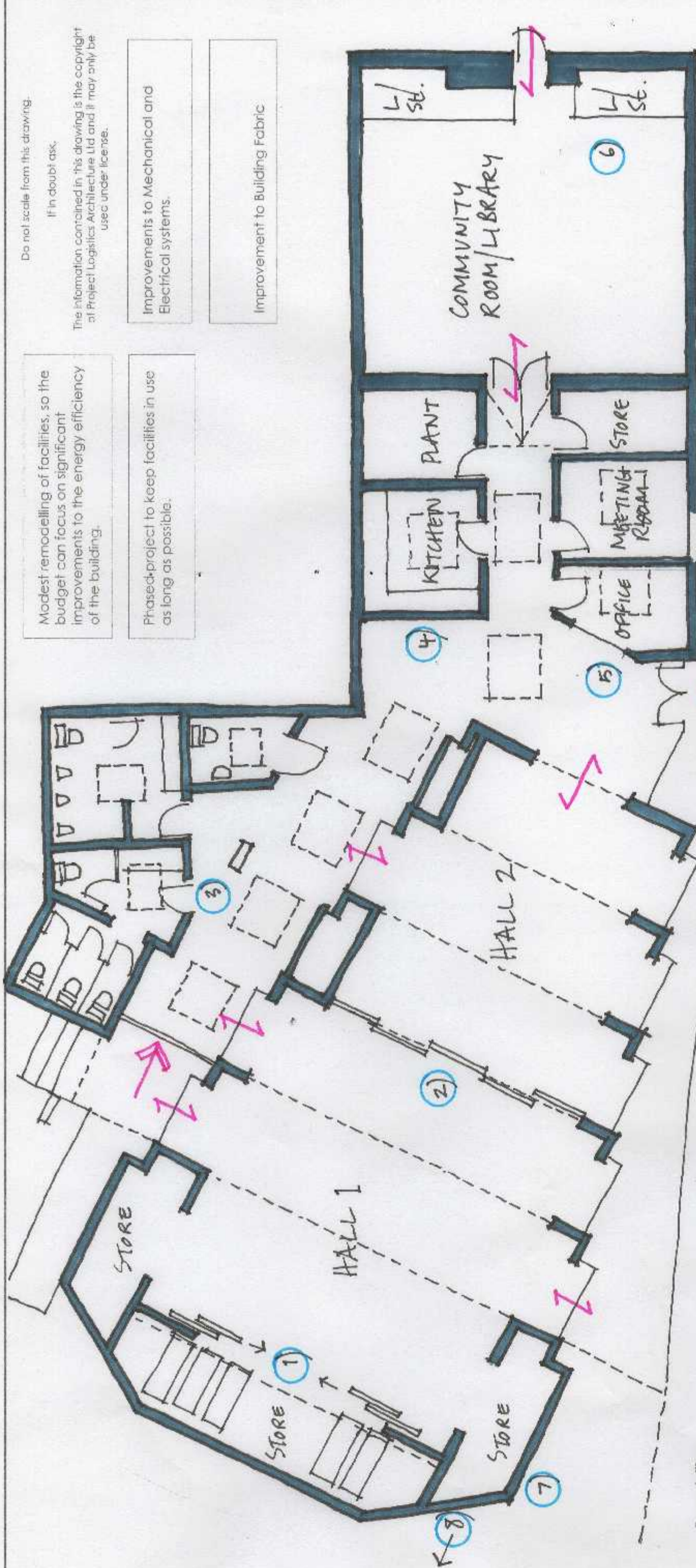
The information contained in this drawing is the copyright of Project Logistics Architecture Ltd and it may only be used under license.

Modest remodelling of facilities, so the budget can focus on significant improvements to the energy efficiency of the building.

Phased project to keep facilities in use as long as possible.

Improvements to Mechanical and Electrical systems.

Improvement to Building Fabric



**Remodelling**

- 1) Remove stage, changing rooms and all steps. Create storage areas.
- 2) Erect moveable wall to create flexible hall spaces.
- 3) Remodel toilets; expand in front storage room.
- 4) Reduce size of kitchen and plant room to create a wider route to the community room. Swap kitchen and plant spaces; enable kitchen to serve halls.
- 5) Create office in current committee room (+ storage). Convert library office in to store for community room.
- 6) Library shelving to stack, creating a room space when not in use for library functions.
- 7) Raise paving to upper level in front of War Memorial (maintain emergency egress from Hall 1)
- 8) Pave across vehicle access, parking and apron of buildings to create "platform".

Areas	Existing hall (excluding stage and changing rooms)	Stage and stores	Hall 1	Hall 2	Library (existing)	Community Room (proposed)
	167m <sup>2</sup>	60m <sup>2</sup>	125m <sup>2</sup>	75m <sup>2</sup>	90m <sup>2</sup>	75m <sup>2</sup>